



*This edition of the fall Newsletter is dedicated to work that has been done to the **Glenaladale School House** over the past eight months*

The school house, under the direction of Aggi-Rose Reddin and head carpenter Patrick Callbeck, has taken on a whole new life. Beginning to be restored to its former historical life, it is now a very welcoming addition to visitors of Glenaladale. The first thing one will observe is its location high on the hill, overlooking the estate. The positioning of the school was carefully considered and every detail was thoughtfully planned, including the beautiful heritage colour of the shingles. The colour was chosen from some of the original shingles found in the school itself.



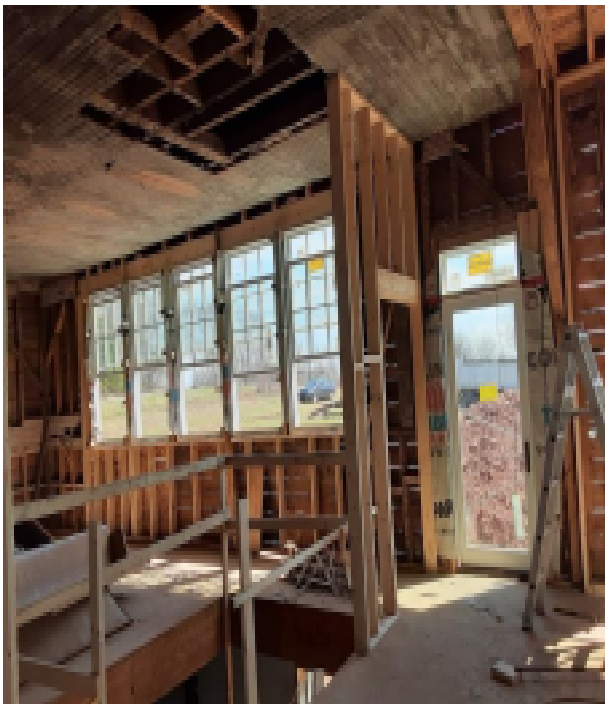
The school at its original location at Glenaladale



The school at its present location overlooking beautiful Tracadie Bay



After a well-deserved winter break, work picked up again in May with the installation of a new steel roof by MacPherson Builders who braved strong winds to “git-er done”! While that was happening Patrick was busy prepping the double exterior walls for insulation and the interior walls were erected.

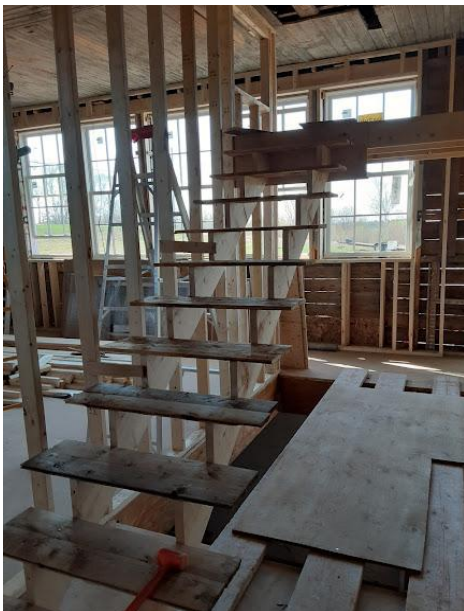


The next step was to install the steel structural supports for the loft. Here Patrick was assisted by Board member Wayne Corrigan. A somewhat nerve-wracking task to get such heavy beams 11' into position but it all went smoothly!



The Construction Association of PEI Youth in Trades students spent a few days onsite helping with the installation of the stairs leading to the basement and the loft, finishing the new sheer wall on the main floor and opening the end wall so more doors and windows could be installed.

And what a view from that end - can't wait to have the deck built next spring!



We were pleased to welcome Jesus Cuevas Montes, a student in Holland College's Construction Technology program who came on board to assist with the continued progress. Work continued over the summer months, with the addition of summer students Wil Fradsham and Evan Trainor.



We were fortunate to also have assistance from the Construction Association's Newcomers in Trades students who assisted in prepping and staining the shingles and adding gyproc in the loft.



A drive by Glenaladale these days will show major changes to the landscape, a result of the work done by Corrigan Construction to give us space for the many visitors we hope to welcome in June. And once the exterior of the school is complete, work will continue on the interior. Come spring the decks will be all that's left before we can celebrate the re-opening of Glenaladale School in its new form as a vibrant arts and culture centre!

We are proud of this recent progress and are now focused on preparations for the official opening in June 2022 for the **250th Anniversary of the Arrival of the Glenaladale Settlers**. We are certain visitors will be thrilled and impressed with this particular phase of our project.

Much work and dedication has been put into the regeneration of this important element of the Glenaladale Estate. This regeneration is a huge financial undertaking. If you are able to make a donation (perhaps as a former student or in memory of one), please visit our website at <https://glenaladalepei.com/donate> for options.

We appreciate your continued support for our work. Thank you for playing a part in seeing our vision come to life.

From the board of Glenaladale Heritage Trust:

Nollaig Chridheil agus Bliadhna Mhath
Merry Christmas and Happy New Year!

